

ENGINEERING REPORT

PRODUCT:

Bezdan Stainless Square Post System: 34" and 34.5" Posts, Interior Applications

CODES MET:

IBC 2018 and IRC 2018

DATE:

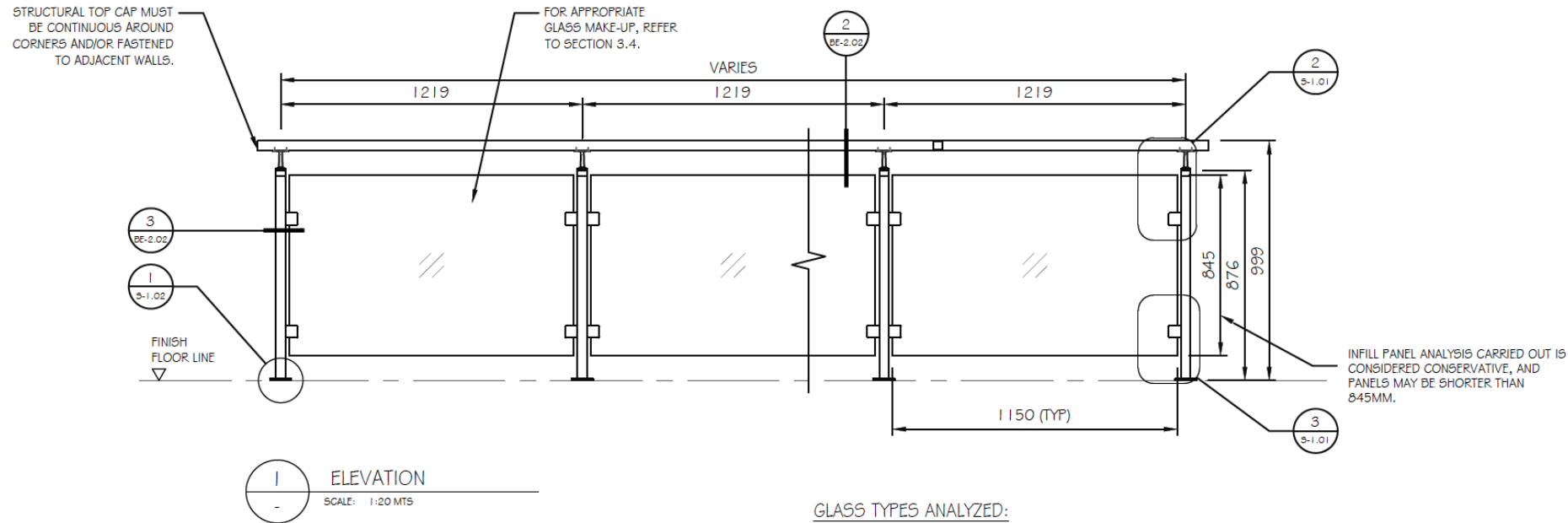
February 2022

Corbally Consulting Ltd. has prepared an engineering report for the Bezdan Stainless Steel Post and Rail System. See pages 2 - 3 to view the condensed report.



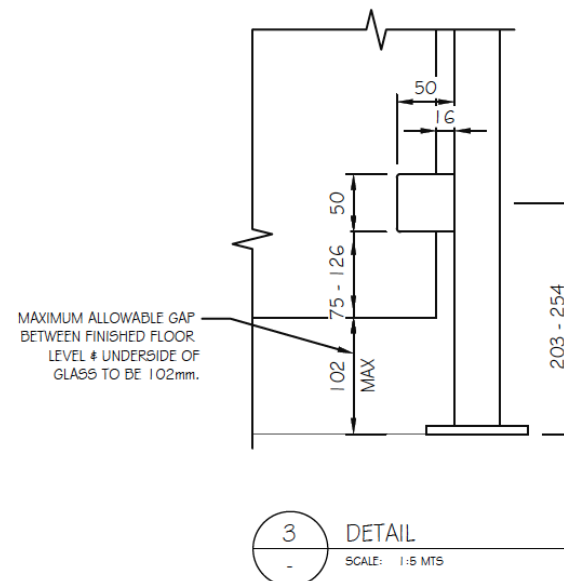
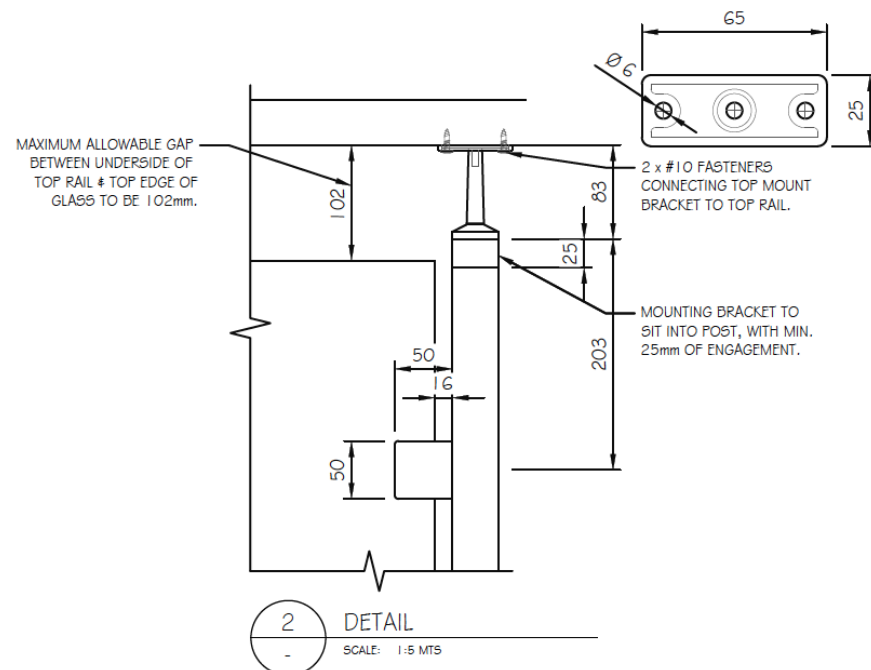
To view the complete report please contact our Customer Service department:

info@geobezdan.com 1 800 663 6356



GLASS TYPES ANALYZED:

- TEMPERED / LAMINATED GLASS: 4/4mm GLASS, WITH 0.060" PVB LAMINATION (SAFLEX CLEAR PVB)
- HEAT-STRENGTHENED / LAMINATED GLASS: 4/4mm GLASS, WITH 0.060" PVB LAMINATION (SAFLEX CLEAR PVB)



NOTE: UNLESS OTHERWISE SPECIFIED, ALL DIMENSIONS IN MILLIMETERS.

FOR THE INTERIOR INSTALLATION SHOWN, THE BEZDAN STAINLESS STEEL POST & RAIL SYSTEM MEETS THE REQUIREMENTS OF THE RELEVANT IBC 2018 AND IRC 2018 CLAUSES BELOW.

GUARD RAIL ANALYSIS CARRIED OUT AS PER THE REQUIREMENTS OF IBC (INTERNATIONAL BUILDING CODE) 2018 AND IRC (INTERNATIONAL RESIDENTIAL CODE) 2018.

GUARD AND INFILL LOADS: IBC 2018 - TABLE 1607.1 AND CLAUSE 1607.8 (SPECIFICALLY 1607.8.1 AND 1607.8.1.1), AS WELL AS ASCE 7-16 - CLAUSE 4.5.1.1 AND IRC 2018 - TABLE R301.5.

GUARD HEIGHT REQUIREMENTS: IBC 2018 - CLAUSE 1015.3.

LOAD COMBINATIONS: IBC 2018 - CLAUSE 2407.1.1 AND IRC 2018 - TABLE R301.5.

THE BEZDAN STAINLESS STEEL POST AND RAIL SYSTEM WAS ANALYZED FOR INTERIOR INSTALLATIONS ONLY. NO EXTERIOR WIND LOAD OR GUARD HEIGHT WAS CONSIDERED.

ALL TABLES REFERENCED WITHIN THESE DRAWINGS ARE CONTAINED WITHIN CORBALLY CONSULTING REPORT: "ENGINEERING REPORT FOR STAINLESS STEEL POST & RAIL SYSTEMS," WHICH SHOULD BE READ IN CONJUNCTION WITH THESE DRAWINGS.

ANALYSIS WAS CARRIED OUT USING THE FOLLOWING APPROPRIATE STANDARDS:

GLASS DESIGN

DESIGN BASIS FOR GLASS: IBC 2018 - CHAPTER 24.

DESIGN BASIS FOR GLASS IN GUARD RAILS: IBC 2018 - SECTION 2407.

STRUCTURAL SUFFICIENCY OF GLASS: ASTM E1300-16, "STANDARD PRACTICE FOR DETERMINING LOAD RESISTANCE OF GLASS IN BUILDINGS."

STAINLESS STEEL DESIGN

STAINLESS STEEL MATERIAL PROPERTIES: ASCE 8-02, "DESIGN OF COLD FORMED STAINLESS STEEL STRUCTURAL MEMBERS."

STEEL DESIGN: IBC 2018 - CHAPTER 22.

CONNECTIONS

STEEL CONNECTIONS: IBC 2018 - CLAUSE 2204.2 AND AISC 360-16, "SPECIFICATION FOR STRUCTURAL STEEL IN BUILDINGS."

CONCRETE CONNECTIONS: IBC 2018 - CLAUSE 1901.3 AND ACI 318-19, "BUILDING CODE DESIGN FOR STRUCTURAL CONCRETE."

WOOD CONNECTIONS: IBC 2018 - CLAUSE 2307.1 AND THE AMERICAN WOOD COUNCILS (AWC) "NATIONAL DESIGN STANDARD."

1	REVISION 1	02/25/22
No.	ISSUE / REVISION	MM/DD/YY

ALL RIGHTS RESERVED, PROPERTY OF CORBALLY CONSULTING, USE OR REPRODUCTION PROHIBITED WITHOUT PRIOR WRITTEN PERMISSION.

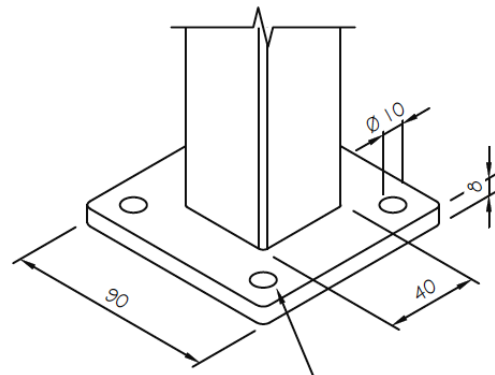
BEZDAN METAL & GLASS REVIEW

4050 GRAVELEY ST, BURNABY, BC V5C 4A5

METAL & GLASS REVIEW

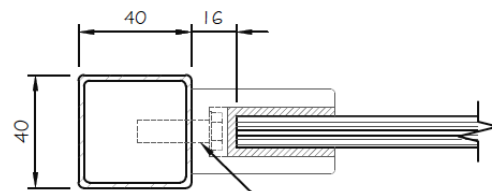
BEZDAN STAINLESS STEEL POST & RAIL SYSTEM

DATE:	FEBRUARY 2022	DRAWING No:	S-1.01
SCALE:	AS SHOWN		
DESIGNED:	DOH		
DRAWN:	M	PROJECT No:	CC21-042
REVIEWED:	DOH		



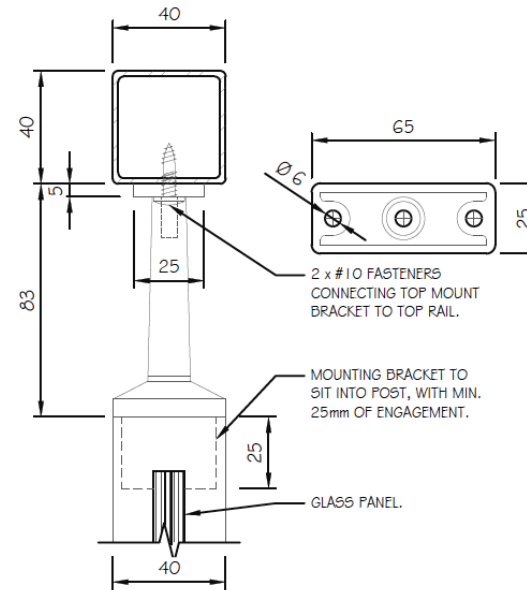
FOR FASTENING TO STEEL, REFER TO SECTION 3.5.1.
 FOR FASTENING TO CONCRETE, REFER TO SECTION 3.5.2.
 FOR FASTENING TO WOOD, REFER TO SECTION 3.5.3.

1 ISOMETRIC
 SCALE: 1:2 MTS



7.9mm Ø BOLT
 CONNECTING
 CLIP TO POST.

3 SECTION
 SCALE: 1:2 MTS



2 x #10 FASTENERS
 CONNECTING TOP MOUNT
 BRACKET TO TOP RAIL.

MOUNTING BRACKET TO
 SIT INTO POST, WITH MIN.
 25mm OF ENGAGEMENT.

GLASS PANEL.

2 SECTION
 SCALE: 1:2 MTS

NOTE: UNLESS OTHERWISE SPECIFIED, ALL DIMENSIONS IN MILLIMETERS.

FOR THE INTERIOR INSTALLATION SHOWN, THE BEZDAN STAINLESS STEEL POST & RAIL SYSTEM MEETS THE REQUIREMENTS OF THE RELEVANT IBC 2018 AND IRC 2018 CLAUSES BELOW.

GUARD RAIL ANALYSIS CARRIED OUT AS PER THE REQUIREMENTS OF IBC (INTERNATIONAL BUILDING CODE) 2018 AND IRC (INTERNATIONAL RESIDENTIAL CODE) 2018.

GUARD AND INFILL LOADS: IBC 2018 - TABLE 1607.1 AND CLAUSE 1607.8 (SPECIFICALLY 1607.8.1 AND 1607.8.1.1), AS WELL AS ASCE 7-16 - CLAUSE 4.5.1.1 AND IRC 2018 - TABLE R301.5.

GUARD HEIGHT REQUIREMENTS: IBC 2018 - CLAUSE 1015.3.

LOAD COMBINATIONS: IBC 2018 - CLAUSE 2407.1.1 AND IRC 2018 - TABLE R301.5.

THE BEZDAN STAINLESS STEEL POST AND RAIL SYSTEM WAS ANALYZED FOR INTERIOR INSTALLATIONS ONLY. NO EXTERIOR WIND LOAD OR GUARD HEIGHT WAS CONSIDERED.

ALL TABLES REFERENCED WITHIN THESE DRAWINGS ARE CONTAINED WITHIN CORBALLY CONSULTING REPORT: "ENGINEERING REPORT FOR STAINLESS STEEL POST & RAIL SYSTEMS," WHICH SHOULD BE READ IN CONJUNCTION WITH THESE DRAWINGS.

ANALYSIS WAS CARRIED OUT USING THE FOLLOWING APPROPRIATE STANDARDS:

GLASS DESIGN

DESIGN BASIS FOR GLASS: IBC 2018 - CHAPTER 24.

DESIGN BASIS FOR GLASS IN GUARD RAILS: IBC 2018 - SECTION 2407.

STRUCTURAL SUFFICIENCY OF GLASS: ASTM E1300-16, "STANDARD PRACTICE FOR DETERMINING LOAD RESISTANCE OF GLASS IN BUILDINGS."

STAINLESS STEEL DESIGN

STAINLESS STEEL MATERIAL PROPERTIES: ASCE 8-02, "DESIGN OF COLD FORMED STAINLESS STEEL STRUCTURAL MEMBERS."

STEEL DESIGN: IBC 2018 - CHAPTER 22.

CONNECTIONS

STEEL CONNECTIONS: IBC 2018 - CLAUSE 2204.2 AND AISC 360-16, "SPECIFICATION FOR STRUCTURAL STEEL IN BUILDINGS."

CONCRETE CONNECTIONS: IBC 2018 - CLAUSE 1901.3 AND ACI 318-19, "BUILDING CODE DESIGN FOR STRUCTURAL CONCRETE."

WOOD CONNECTIONS: IBC 2018 - CLAUSE 2307.1 AND THE AMERICAN WOOD COUNCILS (AWC) "NATIONAL DESIGN STANDARD."

No.	REVISION	DATE
1	REVISION 1	02/25/22
	ISSUE / REVISION	MM/DD/YY

ALL RIGHTS RESERVED, PROPERTY OF CORBALLY CONSULTING, USE OR REPRODUCTION PROHIBITED WITHOUT PRIOR WRITTEN PERMISSION.

BEZDAN METAL & GLASS REVIEW
 4050 GRAVELEY ST. BURNABY, BC V5C 4A5
 METAL & GLASS REVIEW

BEZDAN STAINLESS STEEL
 POST & RAIL SYSTEM

DATE:	FEBRUARY 2022	DRAWING No:	S-1.02
SCALE:	AS SHOWN		
DESIGNED:	DOH		
DRAWN:	M	PROJECT No:	CC21-042
REVIEWED:	DOH		